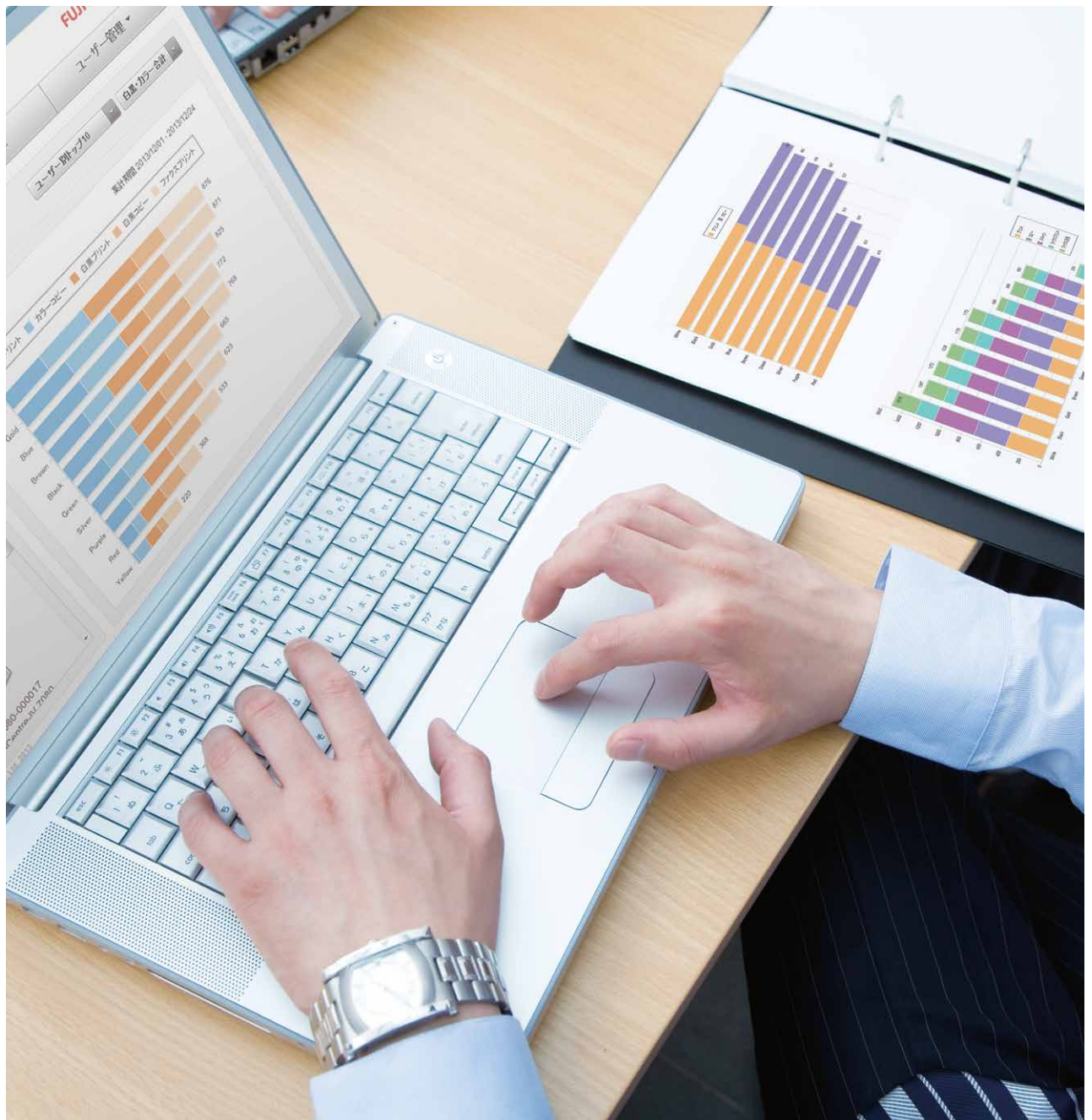


# Device Log Service

A service to tally logs of MFD usage



No Special Server or App Required!

MFD usage can be tallied and viewed via Web UI.

This streamlines expense management and promotes TCO savings.

Device Log Service is a service that allows you to tally and view device usage via a web browser.

Accounting results are shown in color-coded, easy-to-read tables and charts, and they can also be printed.

Filter results by target devices or user IDs to manage expenses for individuals or departments.

To use this service, you only need an MFD with an EP-BB\* contract and a PC with Internet access.

No dedicated server is required. Promote TCO reduction in your office with ease.

\*MFD management service provided by Fuji Xerox.



## Benefits

### Easy introduction

No special equipment or efforts are required. PDCA cycle to achieve cost saving can be created easily.

### Detailed management

Usage can be tallied per device or user. You can pinpoint how the devices are being used.

### Visualized savings

Usage can be visualized with tables and charts. This will promote company-wide cost-saving consciousness.

### Optimal deployment

Usage per department can be obtained. Consolidate and deploy the optimal number of devices.

# Simple and easy-to-use operation screen

## Home Page – Overall Usage

After you log in, the Home Page will be displayed where you will see a list of managed devices and This Month's Usage. The Function Toolbar at the top of the Home Page allows you to switch between functions.



## Usage Data Accounting –

### Accounting Patterns can be registered

You can calculate usage by user or device, and download the usage data. In addition, you can collate and calculate the usage of multiple tenants. You can set detailed accounting targets and items according to usage purpose, and display the accounting results as charts. Settings can then be registered as an Accounting Pattern for future use. By setting a unit cost\* for color and black & white, you can calculate the charges and display the data as charts.

\* Unit cost settings apply to all models.

- Pie chart
- Bar/column chart
- Line chart
- Area chart



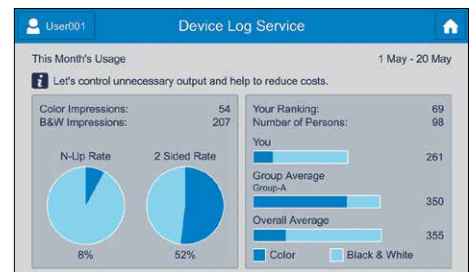
Example of accounting by department

## Check usage on the device

Monthly usage can be displayed on the control panel, along with messages to users. You can display, for example, a message to recommend 2 Sided or 2-Up printing.

\* Multifunction Device Linkage Tool must be installed.

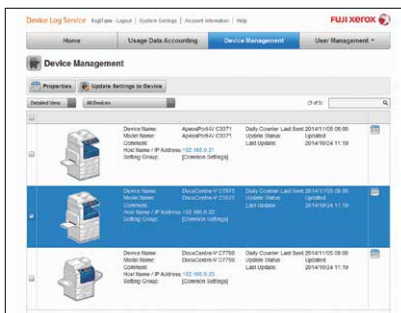
Check usage on the device control panel



Usage display shown on device

## Device Management

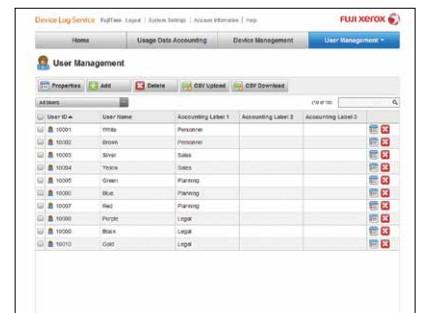
Provides details on devices that are being managed by Device Log Service. You can switch between List and Detailed View, and change accounting settings.



Detailed View

## User Management

Up to 2,000 users can be registered. You can easily add users and update information. User information can be exported and registered in CSV format. You can also synchronize user information with LDAP server data.

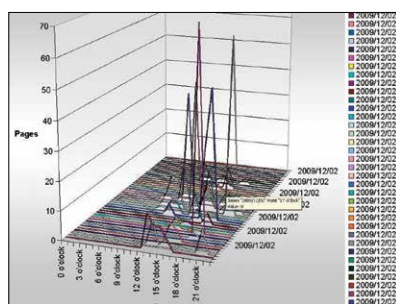


User Management screen

## Job Log Analyzer\*

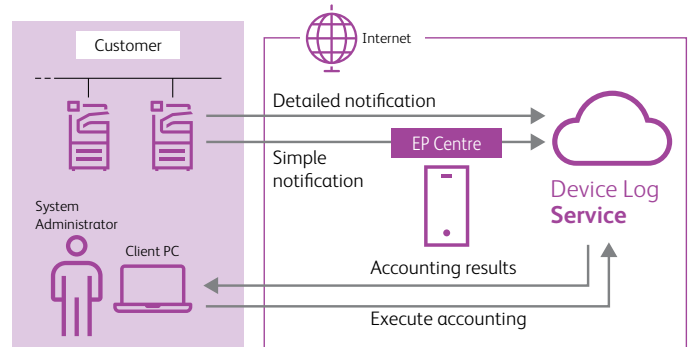
Job Log Analyzer analyzes job logs saved in Device Log Service and creates individual reports and more detailed graphs.

\* Job Log Analyzer can be downloaded from Device Log Service Help.



Job Log Analyzer screen

## How Device Log Service Works



# Operating environment of Device Log Service

## Operating Environment/Client PC

Item	Description
Supported Operating System *1	Windows 10 Home (32bit/64bit) Windows 10 Pro (32bit/64bit) Windows 10 Enterprise (32bit/64bit) Windows 10 Education (32bit/64bit) Windows 8.1 (32bit/64bit) Windows 8.1 Pro (32bit/64bit) Windows 8.1 Enterprise (32bit/64bit) Windows 7 Home Premium (32bit/64bit) [Service Pack 1] Windows 7 Professional (32bit/64bit) [Service Pack 1] Windows 7 Enterprise (32bit/64bit) [Service Pack 1] Windows 7 Ultimate (32bit/64bit) [Service Pack 1]
Web Browser	Internet Explorer 11 Microsoft Edge Mozilla FireFox *2 Google Chrome™ *2
Linked Software	Microsoft Outlook 2016 Microsoft Outlook 2013 Microsoft Outlook 2010 Mozilla Thunderbird Internet Explorer 11

\*1: OS supports the following languages: English, Traditional Chinese, Korean, Thai and Japanese.  
\*2: Web browser is recommended when using multi-tenant accounting feature.

## Job Log Analyzer Operating Environment

Item	Description
Supported Operating System	Windows 10 Pro (32bit/64bit) Windows 10 Enterprise (32bit/64bit) Windows 10 Education (32bit/64bit) Windows 8.1 Pro Update (32bit/64bit) Windows 8.1 Pro (32bit/64bit) Windows 7 Professional (32bit/64bit) [Service Pack 1] Windows 7 Enterprise (32bit/64bit) [Service Pack 1] Windows Server 2016 Standard (64bit) Windows Server 2012 R2 Standard (64bit) Windows Server 2012 Standard (64bit) Windows Server 2008 R2 Standard (64bit) [without a Service Pack, Service Pack 1] Windows Server 2008 R2 Enterprise (64bit) [without a Service Pack, Service Pack 1] Windows Server 2008 Standard (32bit) [Service Pack 2] Windows Server 2008 Enterprise (32bit) [Service Pack 2]
CPU	Pentium® III 1 GHz or higher
Hard disk capacity	4 GB or more free space
Memory capacity	256 MB or larger
Display	XGA (1024 x 768 pixels and above)
Required hardware	DVD-ROM Drive
Required software	Microsoft Excel 2016 (32bit) *1*2 Microsoft Excel 2013 (32bit) *1 Microsoft Excel 2010 (32bit) *1

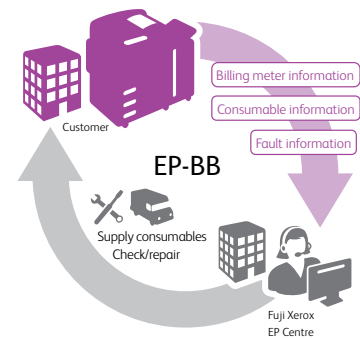
Note: To custom install Microsoft Excel, Microsoft Visual Basic for Applications must be installed.  
Note: For 64-bit versions, Job Log Analyzer software will run on WOW64 (Windows 32-bit on Windows 64-bit) emulation layer subsystem.  
\*1: Only in Compatibility Mode.  
\*2: Operation is guaranteed for the same language version of Microsoft Excel on each language version of operating system.

## EP-BB

### Supports stable operation of devices

EP-BB is a service that utilizes broadband networks to assist management tasks after installation of MFDs for free. It offers prompt support for unexpected malfunctions and runout of consumables as well as reports activity per device depending on customer demand. This will assist efficient utilization of your devices.

- To start receiving this service, you must apply for the service. This service may be unavailable depending on the region of use or contract type. For more information, contact your sales representative.
- Our customer engineer will make the necessary settings for EP-BB on the device unit based on customer demand.
- All communication line charges, including broadband costs, are the responsibility of the customer.



For the latest information about Operating Environment and Supported Models, please visit our company's official site.

Microsoft, Windows, and Internet Explorer are either registered trademarks or trademarks of Microsoft Corporation in the United States and/or other countries. All product/brand names are trademarks or registered trademarks of the respective holders. The descriptions and specifications of products and services are subject to change without prior notice.

For more information or detailed product specification, please call or visit us at

## Fuji Xerox Singapore Pte Ltd

80 Anson Road, #01-01 Fuji Xerox Towers Singapore 079907  
Tel.65-6766-8888

<https://www.fujixerox.com.sg/>

